

COMMERCIAL PROPERTY FOR LEASE

Excellent Food Preparation Space

AVAILABLE SQ.FT.: 1,750

LAND SQ.FT.: POL



1882 W WASHINGTON BLVD, LOS ANGELES CA 90007

- 1,750 sq.ft. unit ideal for food preparation, commissary, ghost kitchen, etc.
- 2 coolers, oven hood, and commercial sink
- 12' ceiling height — 200A/120-480V/3Ph/4W power service
- Includes parking for 3 vehicles at rear of building
- Southeast signalized corner of Washington Blvd & Normandie Ave
- Heavy traffic location! 36,148 vehicles per day traffic count (2022)
- Zoned LA CM
- Part of larger property
- Lease rental: \$3,200 per month (\$1.83 per sq.ft. MG)
- Term: 2-3 years — Available now!

For More Information, Please Contact:

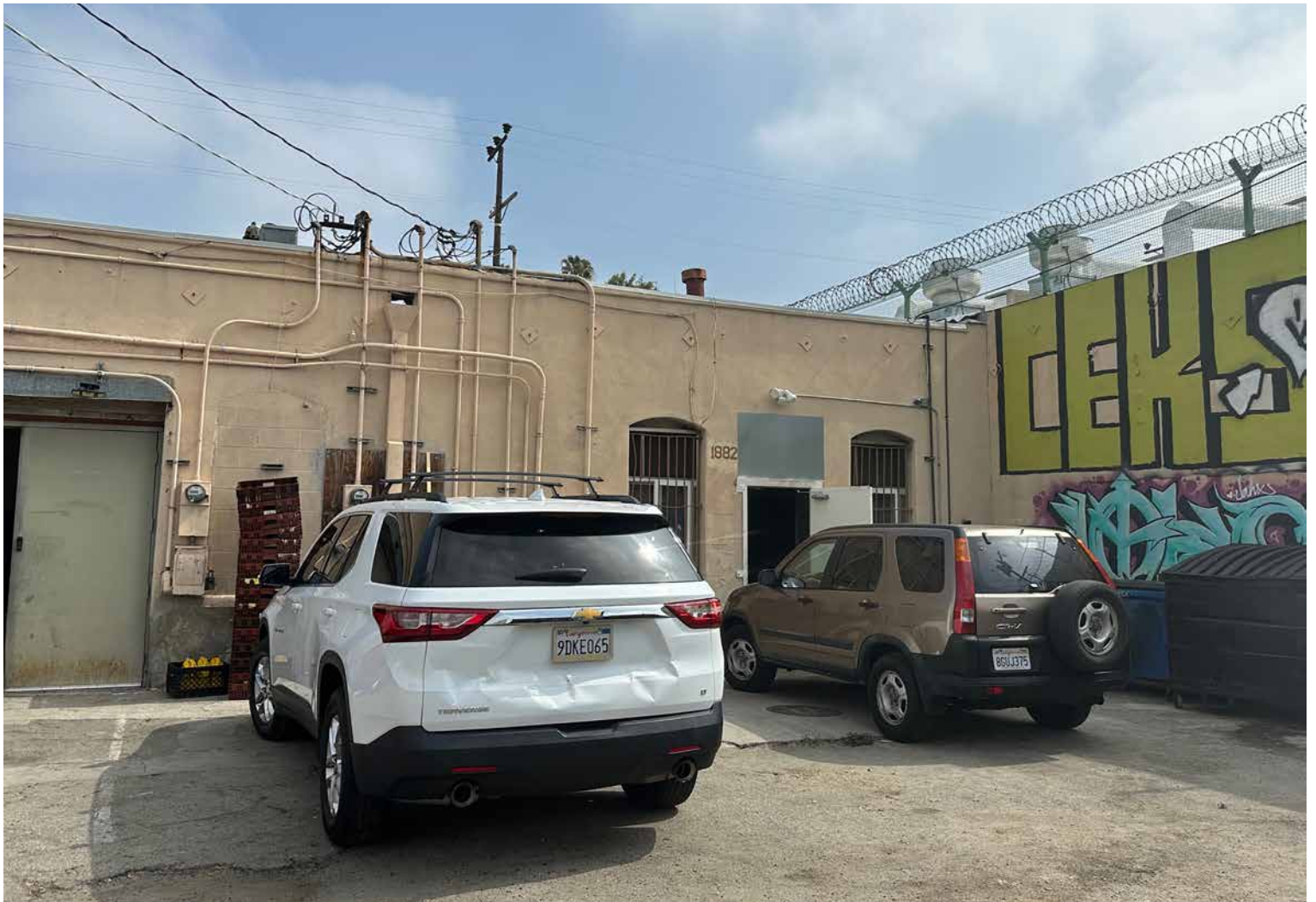
RON KIM

213.222.1209

ron@majorproperties.com

LIC. 01891773

The information contained herein is furnished by sources we deem reliable, but for which we assume no liability. It is given in confidence and with the understanding that all negotiations pertaining to the property be handled through the listing office. All measurements are approximate.





COMMERCIAL PROPERTY FOR LEASE

