

# MULTI-USE PROPERTY FOR LEASE

## Industrial Property

2,400± Sq.Ft. Available



3921 E OLYMPIC BLVD, LOS ANGELES, CA 90023

### PROPERTY HIGHLIGHTS

- Excellent multi-use space available
- Great for warehouse, religious use, or potential retail use
- Heavy traffic location just east of Indiana Street
- Easy freeway access: 1-mile west of 710 freeway and 3/4-mile south of 60 freeway
- Fantastic exposure, visibility and signage
- Clean, open floor plan with high ceiling clearance
- Abundant street parking
- Lease rental: \$3,000 per month (\$1.25 per sq.ft. MG)
- Term: Submit
- Available immediately!

For More Information, Please Contact

**SION KHAKSHOUR**

**213.210.7492**

**sion@majorproperties.com**

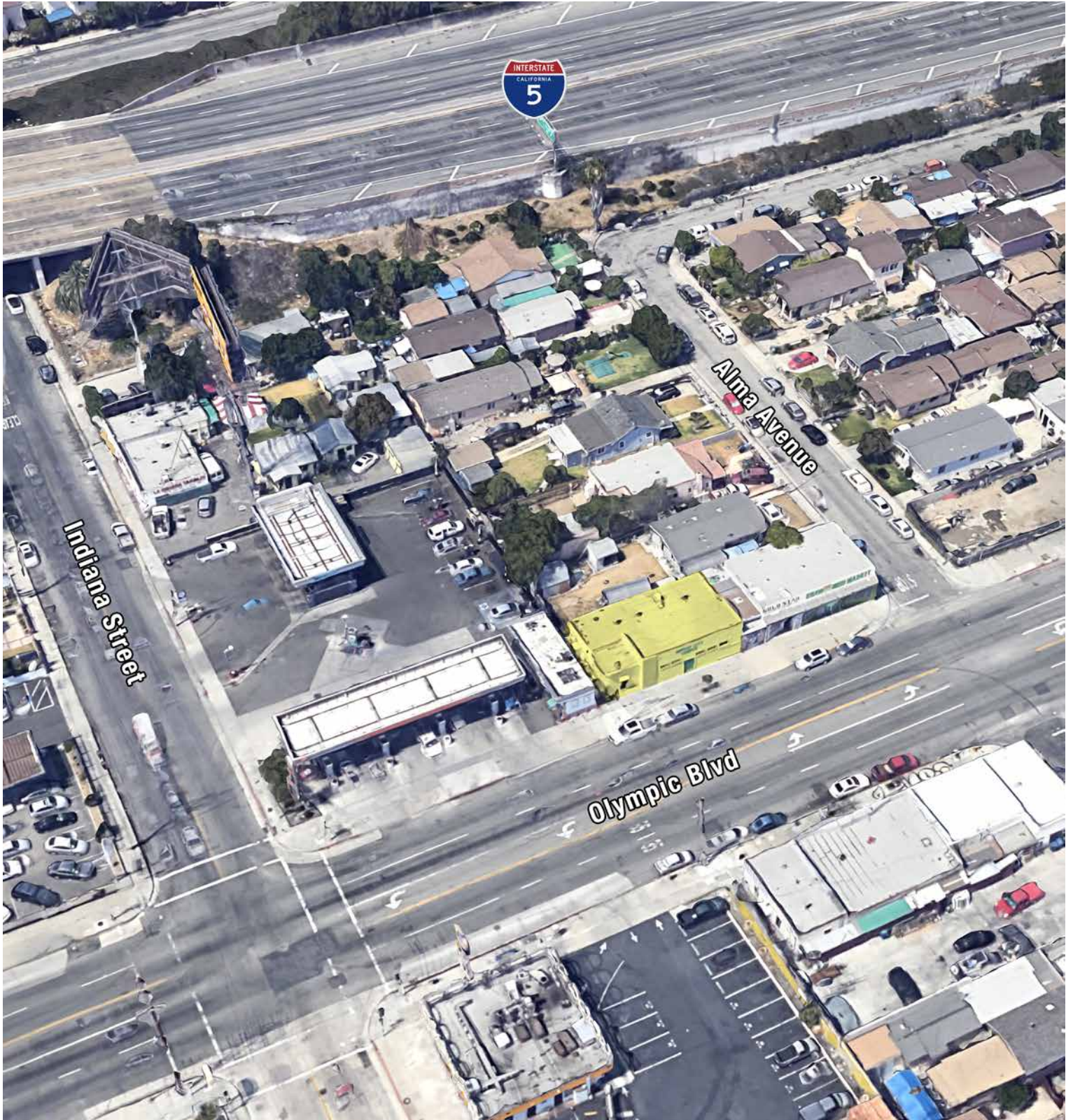
LIC. 00697373

### PROPERTY DETAILS

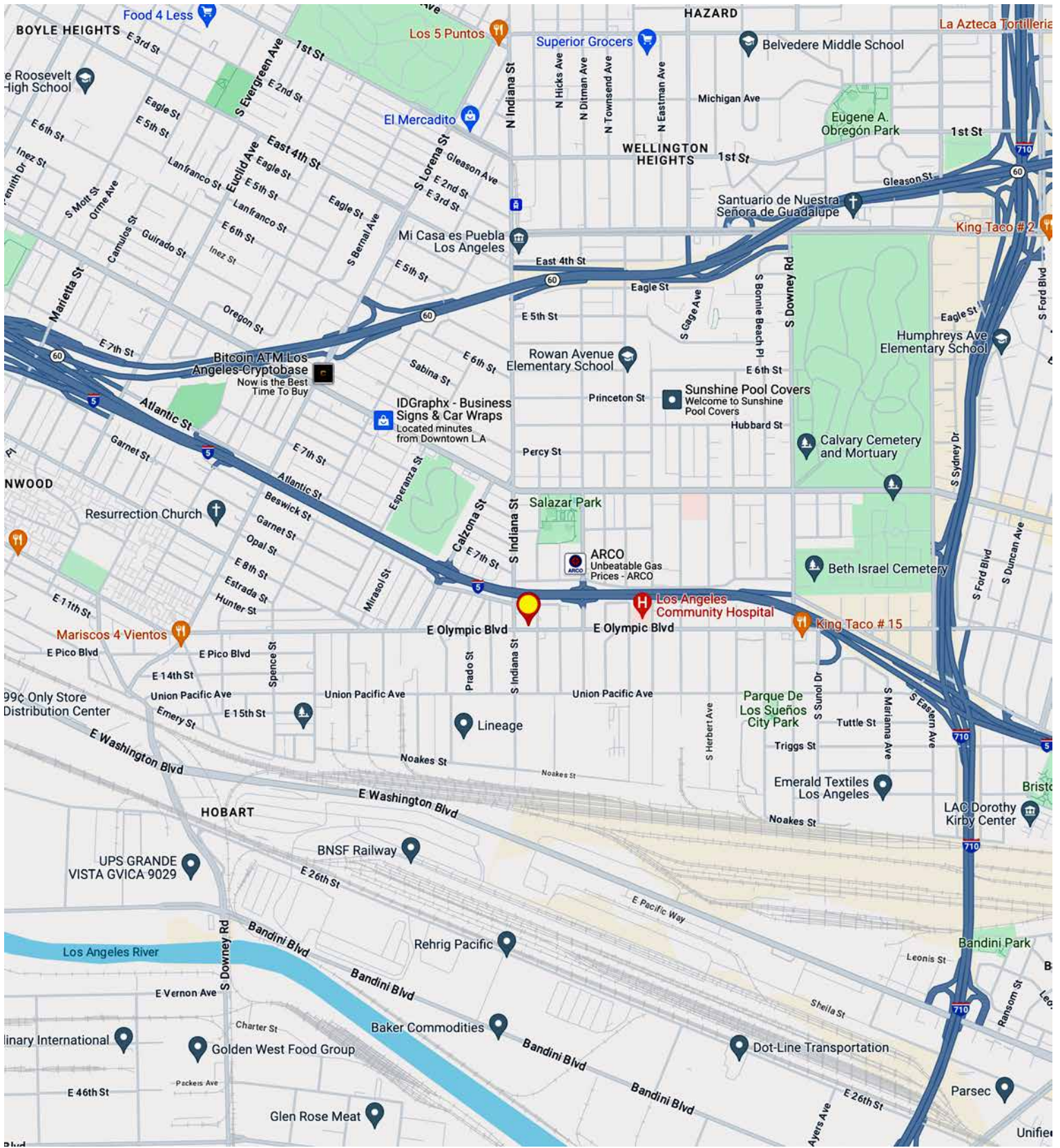
Available Area .....	2,400± Sq.Ft.
Total Building Area .....	4,318± Sq.Ft.
Zone .....	LC M1
Year Built .....	1956
Construction .....	Masonry
Ceiling Height.....	16'
Office Area .....	TBD
Restrooms .....	2
Parking .....	Street
Assessor's Parcel Number ...	5242-008-013

The information contained herein is furnished by sources we deem reliable, but for which we assume no liability. It is given in confidence and with the understanding that all negotiations pertaining to the property be handled through the listing office. All measurements are approximate.

# MULTI-USE PROPERTY FOR LEASE



# MULTI-USE PROPERTY FOR LEASE



**MAJOR PROPERTIES**  
REAL ESTATE  
Commercial • Industrial • Residential

1200 West Olympic Boulevard, Los Angeles, California 90015  
213.747.4151 • fax 213.749.7972 • [www.majorproperties.com](http://www.majorproperties.com)

