

DTLA MULTI-USE PROPERTY FOR SALE

Warehouse/Showroom, Retail, Office

BUILDING SQ.FT.: **10,610**

LAND SQ.FT.: **12,000**



1355-1359 E WASHINGTON BLVD, LOS ANGELES, CA 90021

PROPERTY HIGHLIGHTS

- Two adjacent buildings
- Excellent purchase opportunity
- Many possible uses! Warehouse, showroom, retail/wholesale, creative use, etc.
- Fenced and paved parking for 8± vehicles
- Ground level loading door
- Zoned LA M2
- Located one-half block east of Central Avenue
- Metro Blue light rail line runs in front of property
- Adjacent to Downtown Los Angeles Fashion District
- Asking price: ~~\$2,700,000~~ \$2,500,000 (\$235.63 per SF)

For More Information, Please Contact

SION KHAKSHOUR

213.210.7492

sion@majorproperties.com

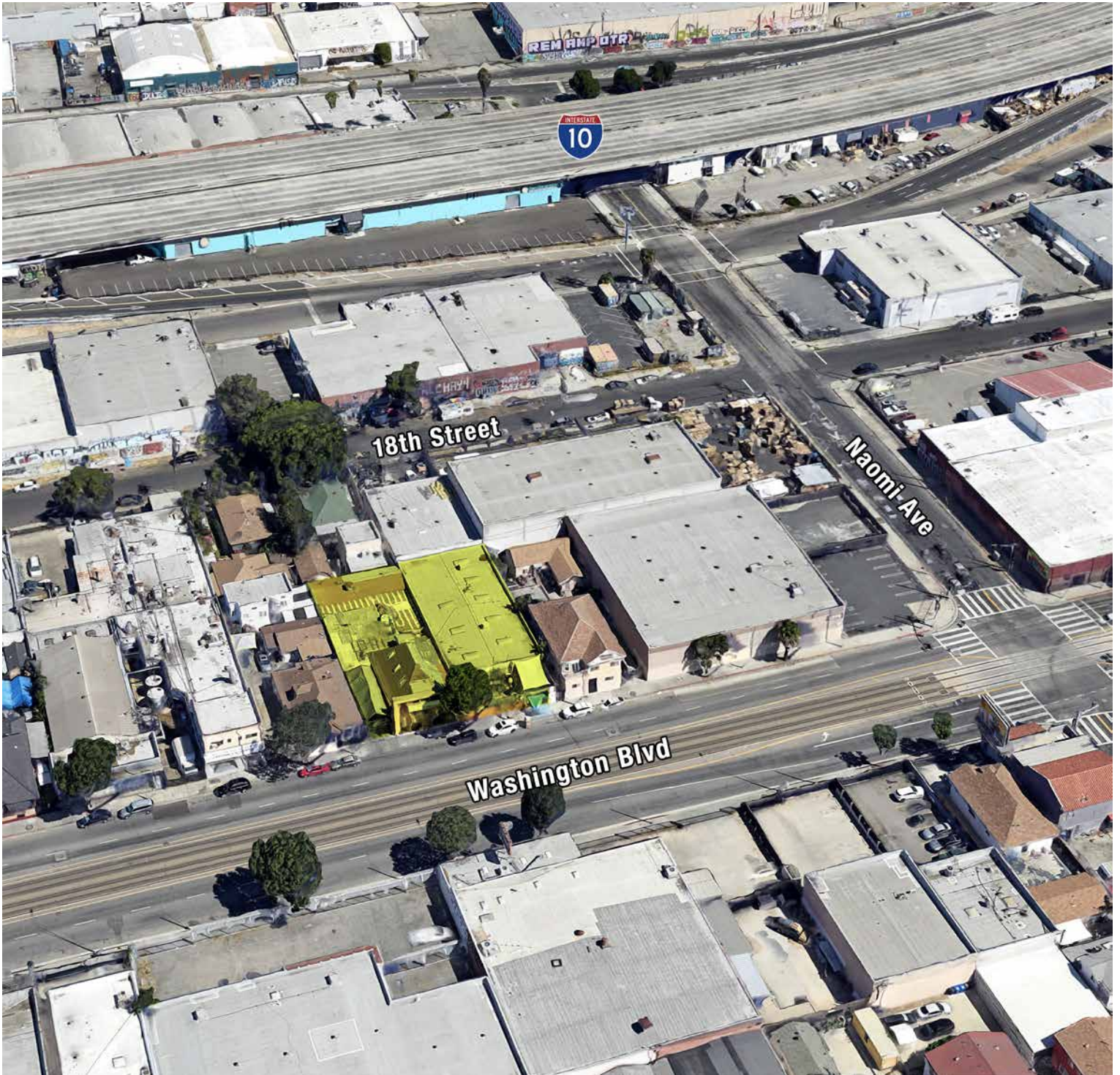
DRE LIC. 00697373

PROPERTY DETAILS

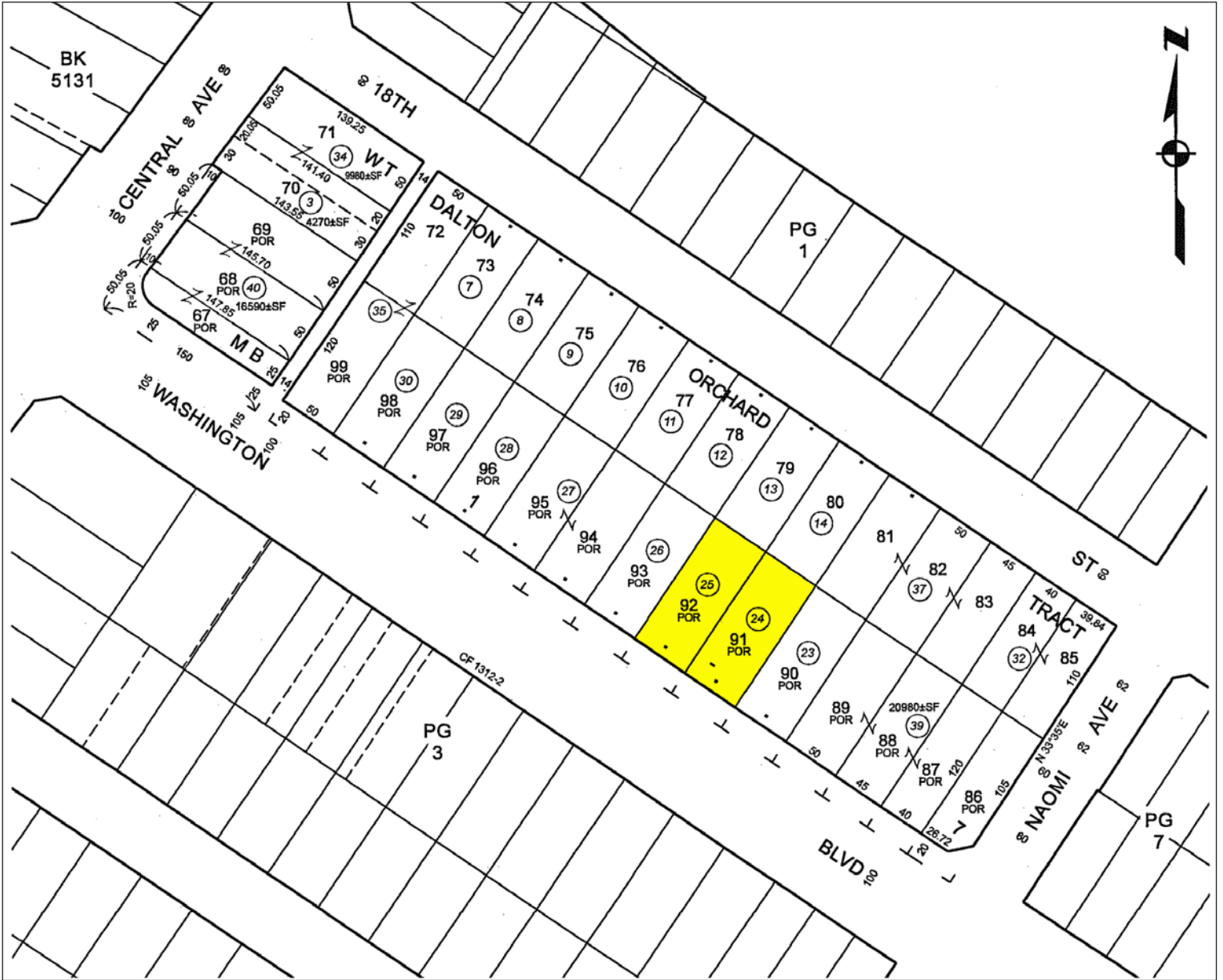
Total Building Area.....10,610 Sq.Ft.
1355 E Washington 5,610 Sq.Ft.
1359 E Washington 5,000 Sq.Ft.
Land Area 12,000 Sq.Ft.
Zone LA M2
Year Built 1905-1935-1965
Construction Mixed
Office Area TBD
Restrooms 2
Parking..... 8±
Ground Level Loading Doors 1: 8x10
Dock High Loading None
Sprinklered..... No
Power..... TBD
APN 5129-002-024,025

The information contained herein is furnished by sources we deem reliable, but for which we assume no liability. It is given in confidence and with the understanding that all negotiations pertaining to the property be handled through the listing office. All measurements are approximate.

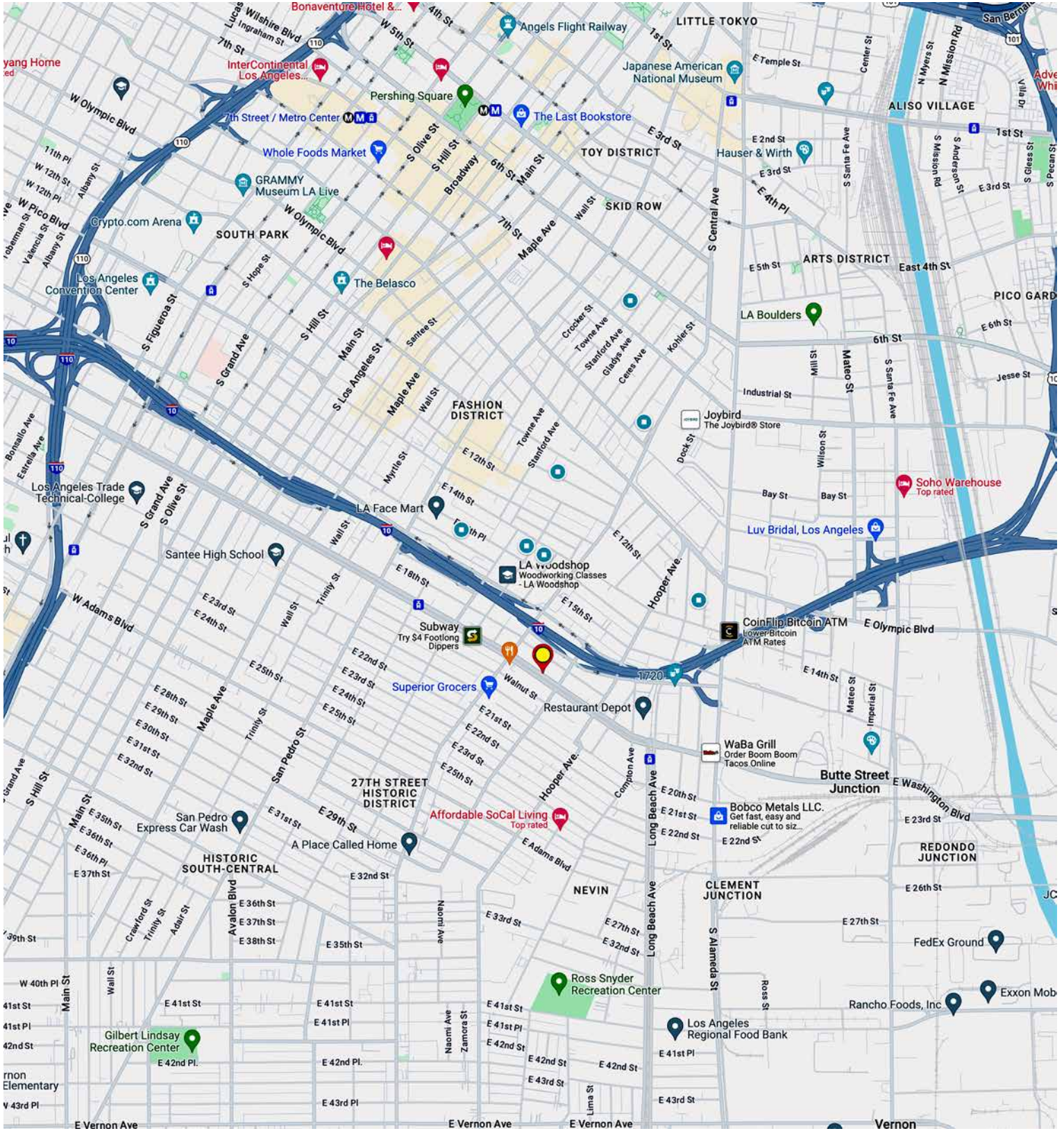
DTLA MULTI-USE PROPERTY FOR SALE



DTLA MULTI-USE PROPERTY FOR SALE



DTLA MULTI-USE PROPERTY FOR SALE



MAJOR PROPERTIES
REAL ESTATE
Commercial • Industrial • Residential

1200 West Olympic Boulevard, Los Angeles, California 90015
213.747.4151 • fax 213.749.7972 • www.majorproperties.com

