

INDUSTRIAL PROPERTY FOR SUBLEASE

Warehouse Space

AVAILABLE SQ.FT.: 4,100



1113 VENICE BOULEVARD, LOS ANGELES, CA 90015

Part of Larger Property

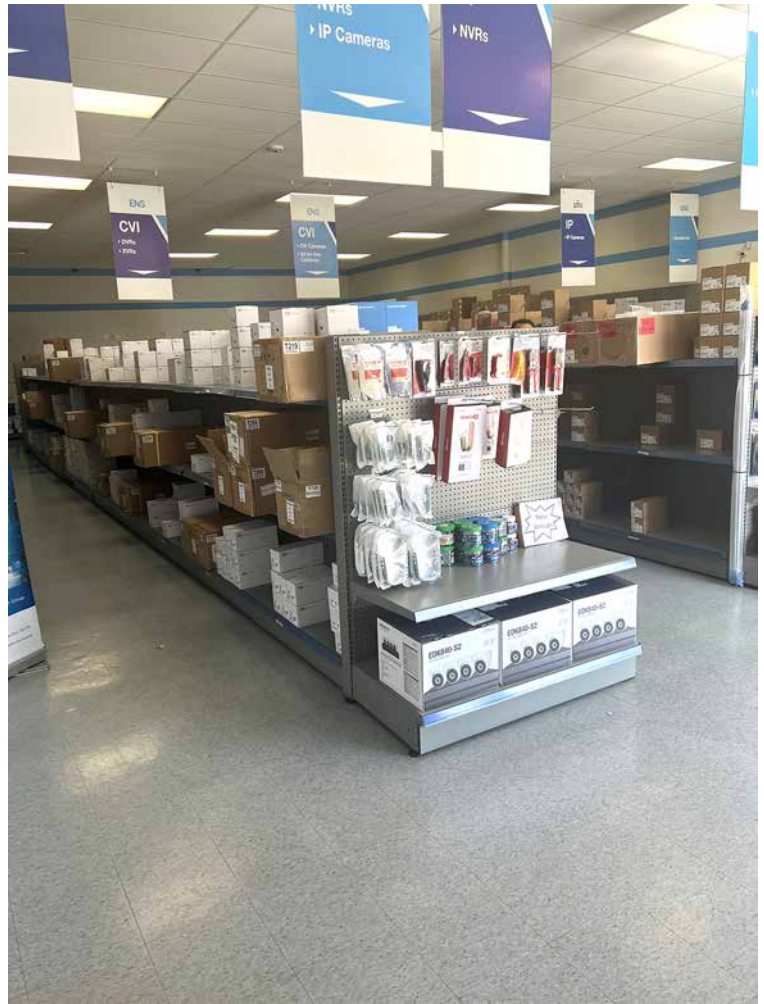
- 4,100 sq.ft. ground floor unit available
- Part of larger 8,200 sq.ft. building
- Shared parking lot for 10 ± vehicles
- Block construction built in 1986
- Fantastic location at the northwest corner of Union Ave & Venice Blvd
- Close to Los Angeles Convention Center, Crypto.com Arena, LA LIVE & DTLA
- Easy access to all Downtown Los Angeles freeways
- Zoned LA M1
- Sublease Rental: \$7,400 per month (\$1.80 per sq.ft. NNN)
- Available in 30 days or less

For More Information, Please Contact:

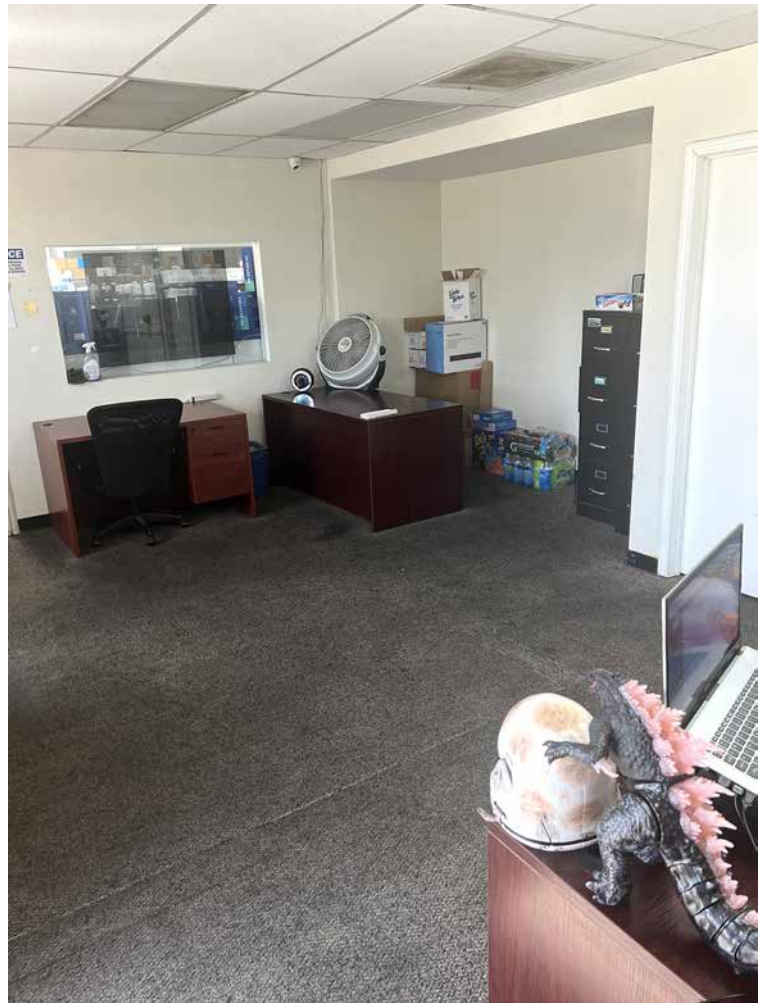
JEFF LUSTER
(213) 747-4152
jeff@majorproperties.com
DRE LIC. 00636424

The information contained herein is furnished by sources we deem reliable, but for which we assume no liability. It is given in confidence and with the understanding that all negotiations pertaining to the property be handled through the listing office. All measurements are approximate.

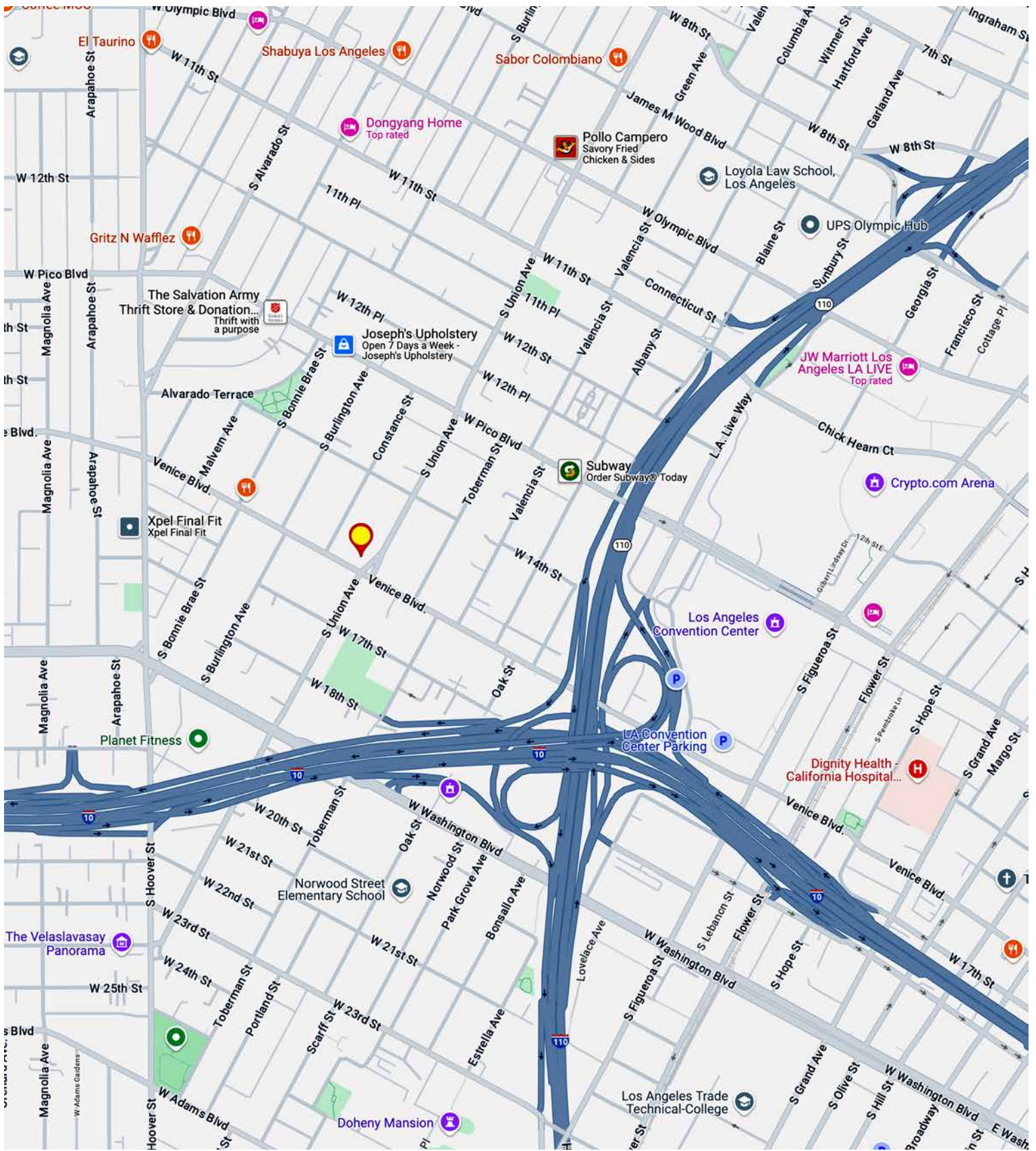
INDUSTRIAL PROPERTY FOR SUBLEASE



INDUSTRIAL PROPERTY FOR SUBLEASE



INDUSTRIAL PROPERTY FOR SUBLEASE



MAJOR PROPERTIES
REAL ESTATE
Commercial • Industrial • Residential

1200 West Olympic Boulevard, Los Angeles, California 90015
213.747.4151 • fax 213.749.7972 • www.majorproperties.com

