

# DTLA MULTI-USE PROPERTY FOR SALE

Warehouse/Showroom, Retail, Office

BUILDING SQ.FT.: **10,610**

LAND SQ.FT.: **12,000**



1355-1359 E WASHINGTON BLVD, LOS ANGELES, CA 90021

## PROPERTY HIGHLIGHTS

- Two adjacent buildings
- Excellent purchase opportunity
- Many possible uses! Warehouse, showroom, retail/wholesale, creative use, etc.
- Fenced and paved parking for 8± vehicles
- Ground level loading door
- Zoned LA M2
- Located one-half block east of Central Avenue
- Metro Blue light rail line runs in front of property
- Adjacent to Downtown Los Angeles Fashion District
- Asking price: ~~\$2,500,000~~ \$2,299,000 (\$216.68 per SF)

For More Information, Please Contact

**SION KHAKSHOUR**

**213.210.7492**

sion@majorproperties.com

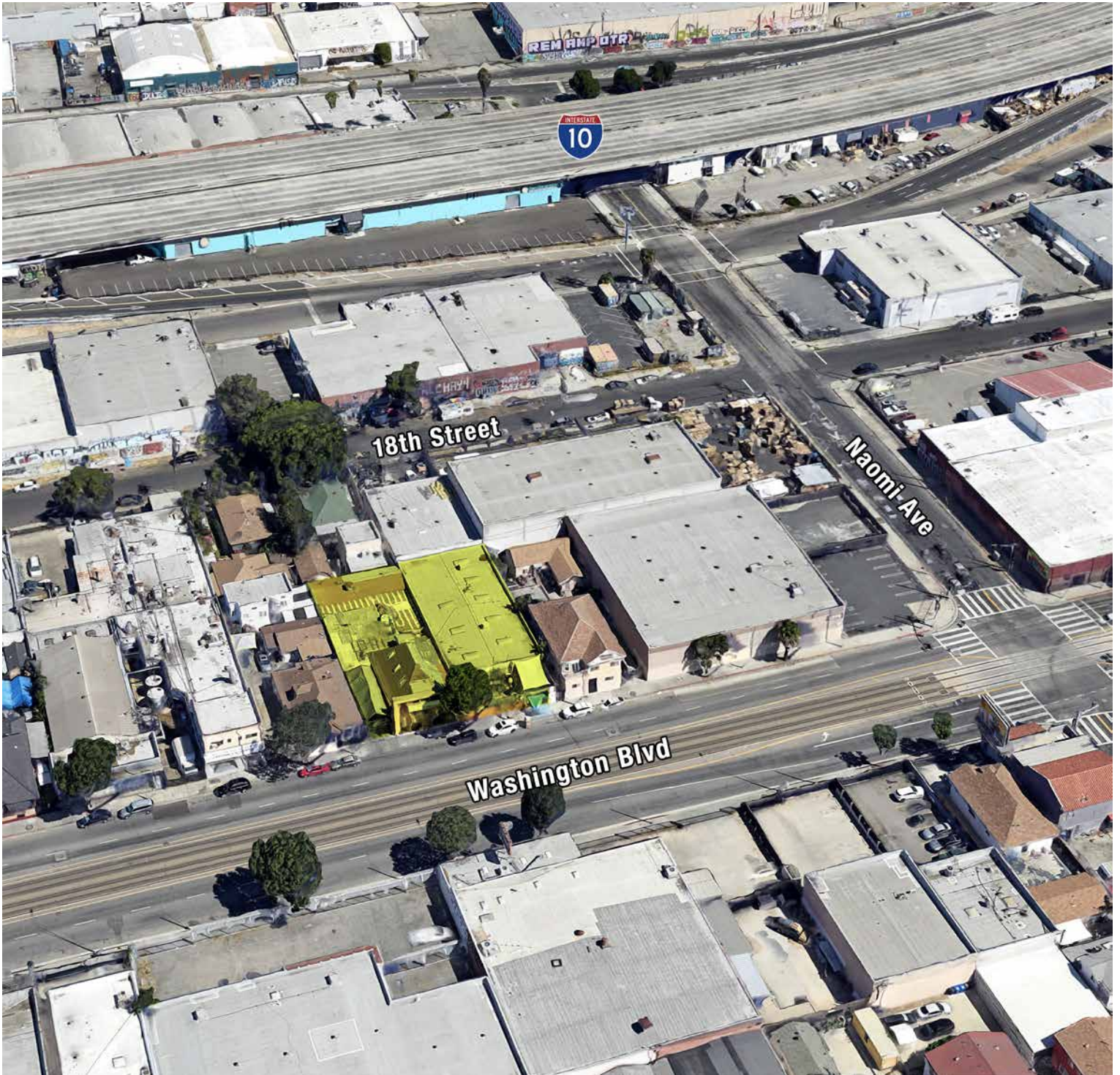
DRE LIC. 00697373

## PROPERTY DETAILS

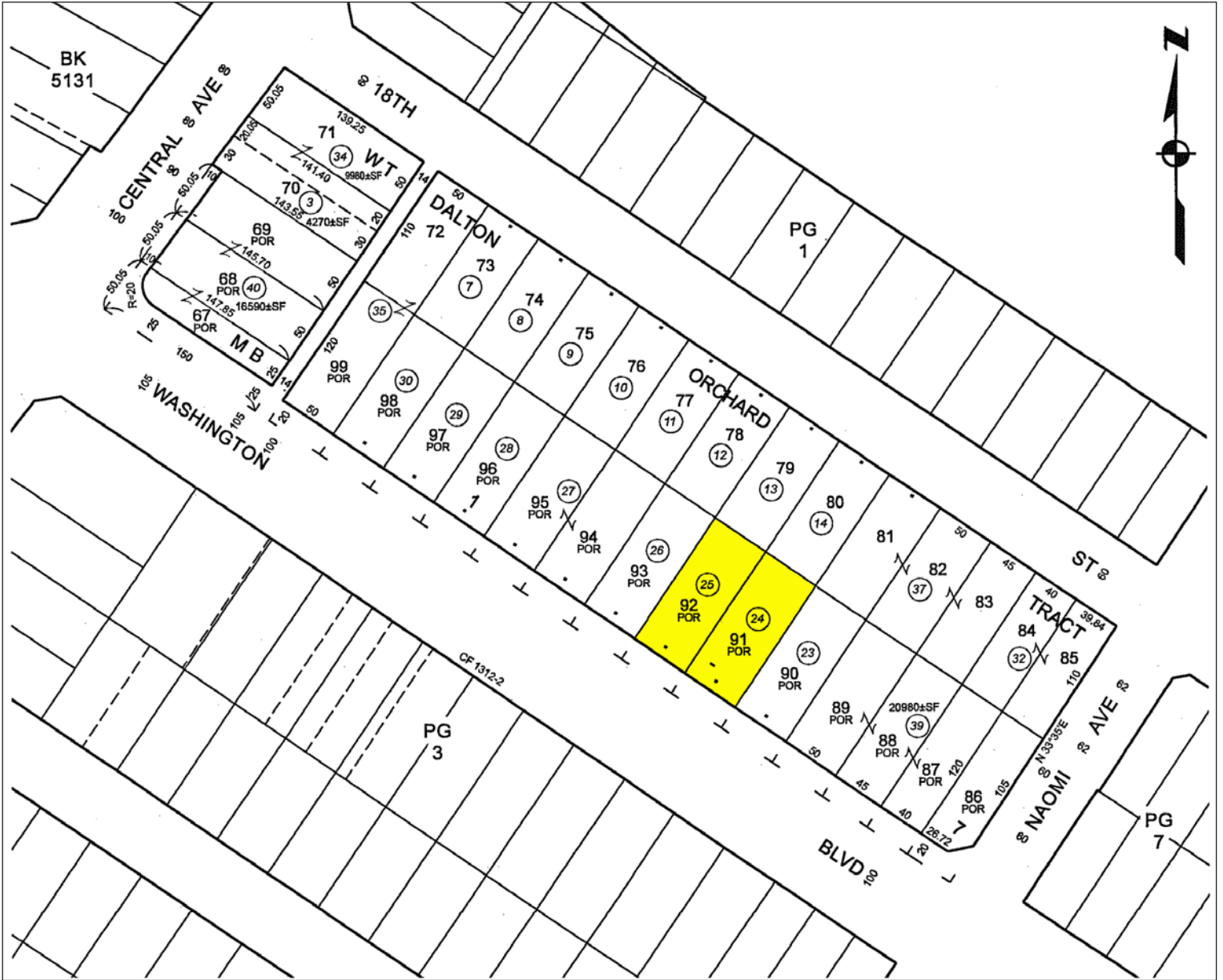
Total Building Area.....10,610 Sq.Ft.  
1355 E Washington ..... 5,610 Sq.Ft.  
1359 E Washington ..... 5,000 Sq.Ft.  
Land Area ..... 12,000 Sq.Ft.  
Zone ..... LA M2  
Year Built ..... 1905-1935-1965  
Construction ..... Mixed  
Office Area ..... TBD  
Restrooms .....2  
Parking.....8±  
Ground Level Loading Doors .....1: 8x10  
Dock High Loading ..... None  
Sprinklered..... No  
Power..... TBD  
APN ..... 5129-002-024,025

The information contained herein is furnished by sources we deem reliable, but for which we assume no liability. It is given in confidence and with the understanding that all negotiations pertaining to the property be handled through the listing office. All measurements are approximate.

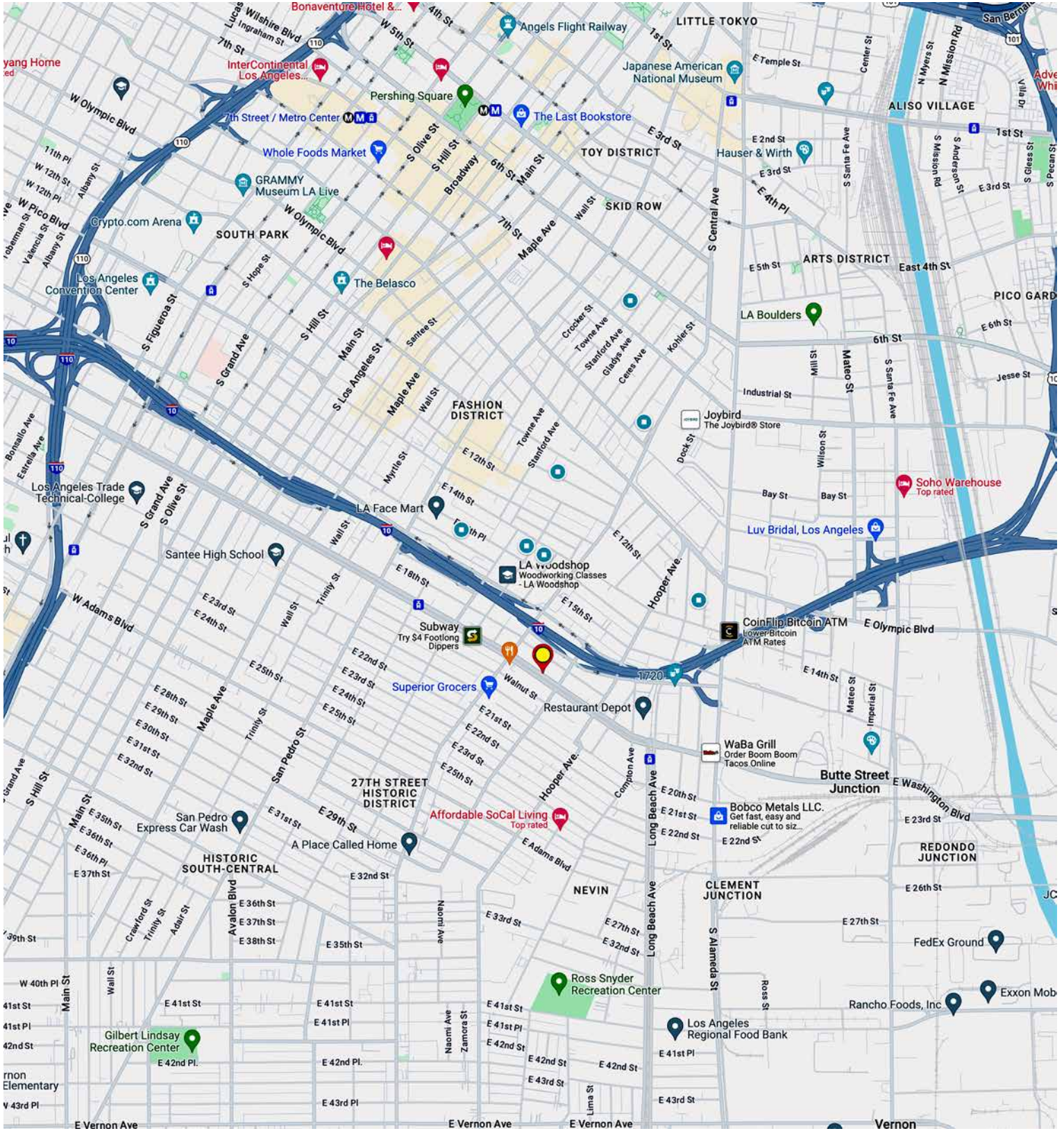
# DTLA MULTI-USE PROPERTY FOR SALE



# DTLA MULTI-USE PROPERTY FOR SALE



# DTLA MULTI-USE PROPERTY FOR SALE



**MAJOR PROPERTIES**  
REAL ESTATE  
Commercial • Industrial • Residential

1200 West Olympic Boulevard, Los Angeles, California 90015  
213.747.4151 • fax 213.749.7972 • [www.majorproperties.com](http://www.majorproperties.com)

