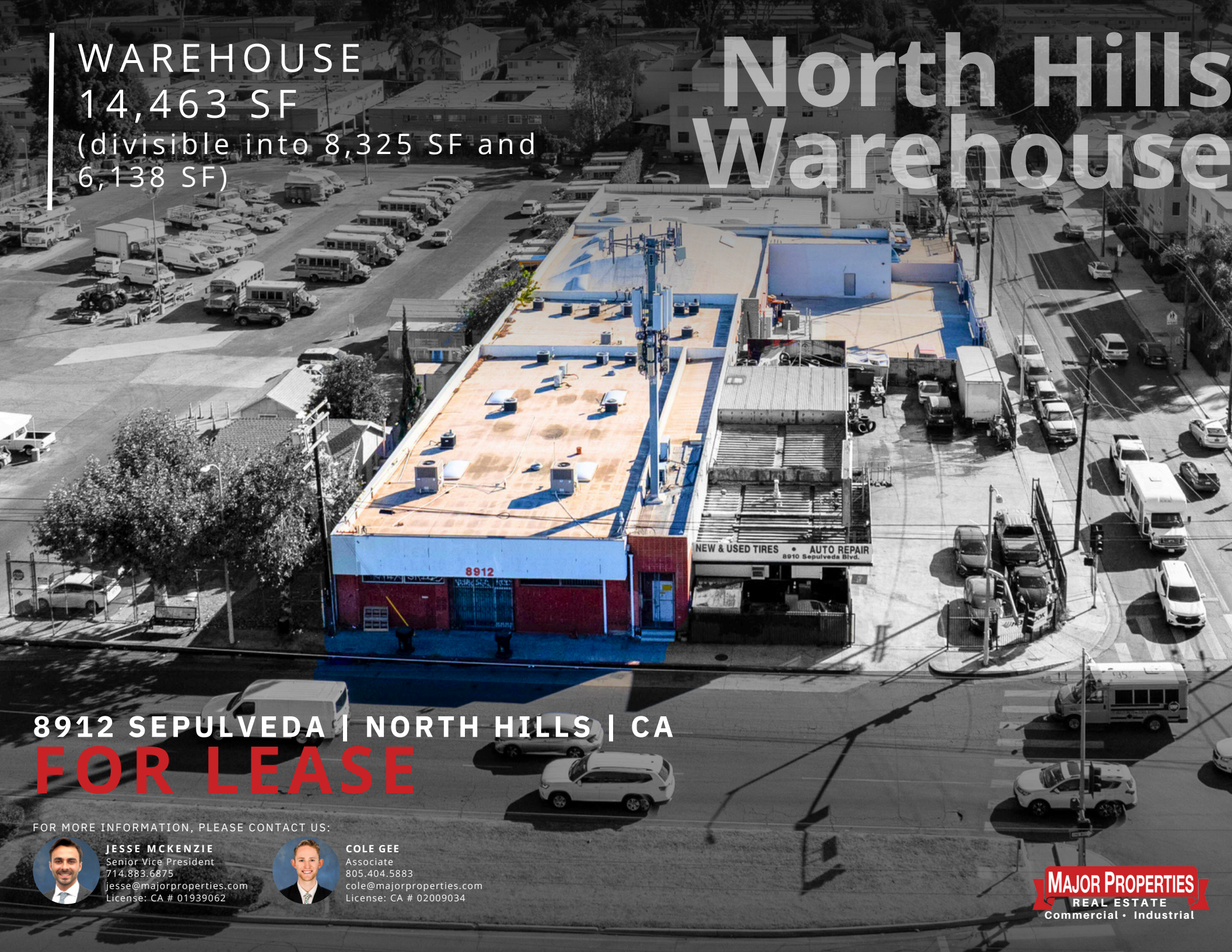


WAREHOUSE
14,463 SF
(divisible into 8,325 SF and
6,138 SF)

North Hills Warehouse



8912 SEPULVEDA | NORTH HILLS | CA
FOR LEASE

FOR MORE INFORMATION, PLEASE CONTACT US:



JESSE MCKENZIE
Senior Vice President
714.883.6875
jesse@majorproperties.com
License: CA # 01939062



COLE GEE
Associate
805.404.5883
cole@majorproperties.com
License: CA # 02009034

MAJOR PROPERTIES
REAL ESTATE
Commercial • Industrial

8912 SEPULVEDA | NORTH HILLS | CA

FOR LEASE

LIGHT INDUSTRIAL

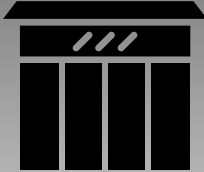
BUILDING HIGHLIGHTS



Auto Repair and Woodworking uses allowed



Gated and Secured parking ± 10 spaces



Frontage on Sepulveda Blvd



Heavy Power

Available Space	14,463 SF (divisible into 8,325 SF and 6,138 SF)
Lease Rate	\$1.25/ft/mo Industrial Gross
CAMs	± \$0.06/ft/mo
Clear Height	12' - 16'
Power	1,200 amps, 3-phase (600 amps per unit)
HVAC	10-ton for 6,000 SF front unit
Sprinklered	Yes
Natural Gas	Yes
Zoning	M1
APN	2654-005-038



8912 SEPULVEDA | NORTH HILLS | CA
FOR LEASE

LIGHT INDUSTRIAL



8912 SEPULVEDA | NORTH HILLS | CA
FOR LEASE

LIGHT INDUSTRIAL



8912 SEPULVEDA | NORTH HILLS | CA
FOR LEASE

LIGHT INDUSTRIAL



8912 SEPULVEDA | NORTH HILLS | CA
FOR LEASE

LIGHT INDUSTRIAL

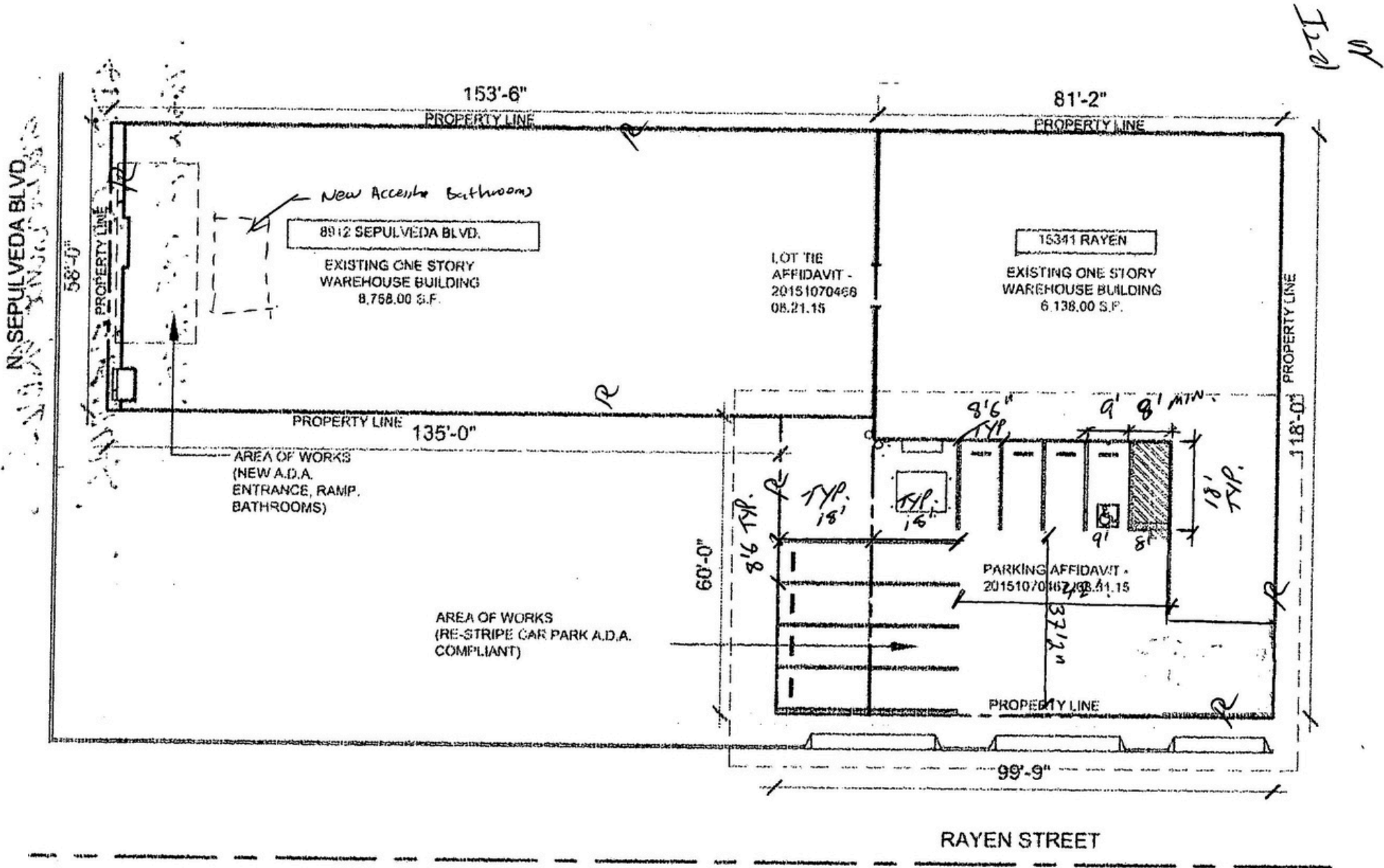


8912 SEPULVEDA | NORTH HILLS | CA
FOR LEASE

LIGHT INDUSTRIAL



SITE PLAN



8912 SEPULVEDA | NORTH HILLS | CA

FOR LEASE

LIGHT INDUSTRIAL



8912 Sepulveda Blvd

Hollywood Burbank Airport

Sepulveda Basin Wildlife Reserve

Sepulveda Basin Recreation Area

SEPULVEDA BASIN

FOR MORE INFORMATION REGARDING THIS
OPPORTUNITY, PLEASE CONTACT:



JESSE MCKENZIE

Senior Vice President

714.883.6875

jesse@majorproperties.com

License: CA # 01939062

COLE GEE

Associate

805.404.5883

cole@majorproperties.com

License: CA # 02009034

The information contained in this offering material is confidential and furnished solely for the purpose of a review by prospective Buyers of the subject property and is not to be used for any other purpose or made available to any other person without the express written consent of Major Properties.

This Brochure was prepared by Major Properties. It contains summary information pertaining to the Property and does not purport to be all-inclusive or to contain all of the information that a prospective Buyer may desire. All information is provided for general reference purposes only and is subject to change. The summaries do not purport to be complete or accurate descriptions of the full documents involved, nor do they constitute a legal analysis of such documents.

This information has been secured from sources we believe to be reliable. We make no representations or warranties, expressed or implied, as to the accuracy of the information. References to square footage or age are approximate. Recipient of this report must verify the information and bears all risk for any inaccuracies.

MajorProperties.com

MAJOR PROPERTIES

1200 W Olympic Blvd

Los Angeles, CA 90015

MAJOR PROPERTIES
REAL ESTATE
Commercial • Industrial