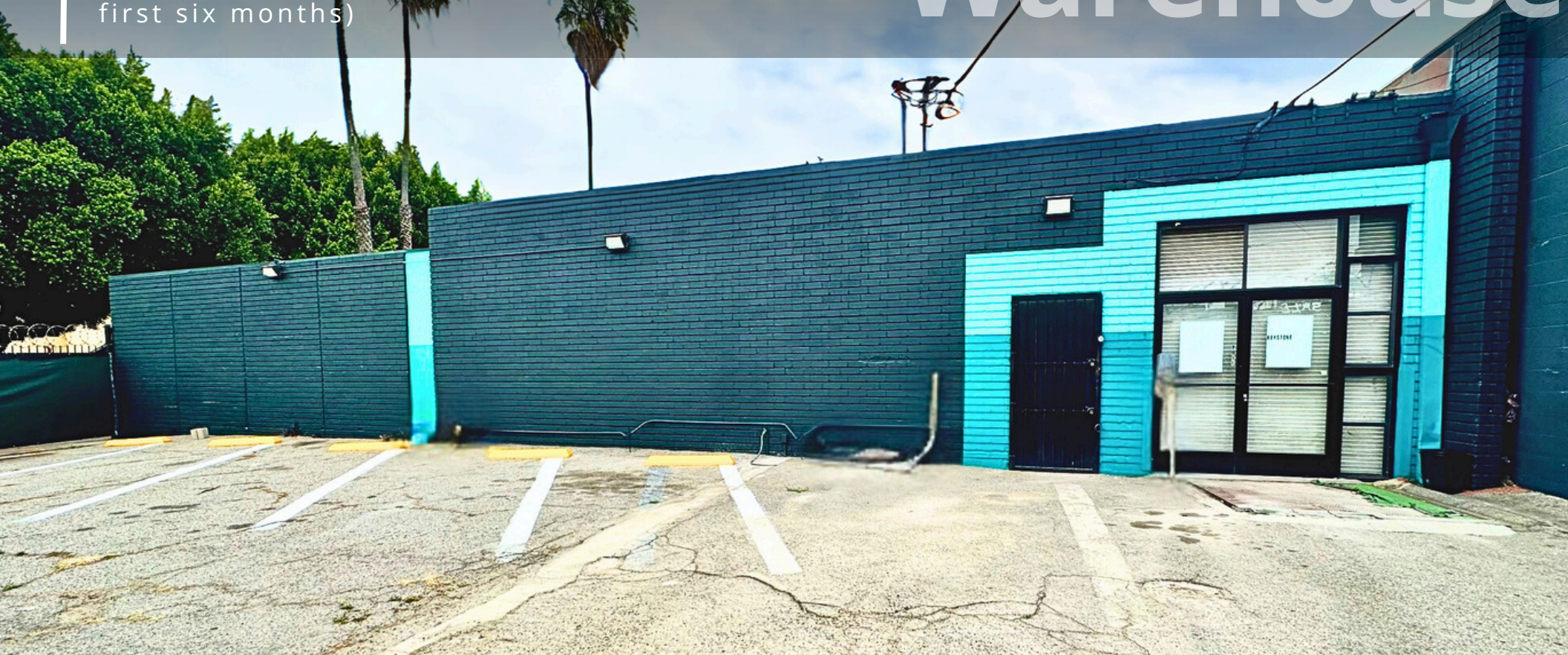


LIGHT DISTRIBUTION
7,320 SF

(A promotional teaser rate of \$1.25
per square foot will apply for the
first six months)

Central LA Warehouse



1212 ALBANY ST | LOS ANGELES | CA 90015

FOR LEASE

FOR MORE INFORMATION, PLEASE CONTACT US:



JESSE MCKENZIE
Senior Vice President
714.883.6875
jesse@majorproperties.com
License: CA # 01939062



BRAD LUSTER
President
213.276.2483
brad@majorproperties.com
License: CA # 00913803

MAJOR PROPERTIES
REAL ESTATE
Commercial • Industrial

1212 ALBANY ST | LOS ANGELES | CA 90015

FOR LEASE

FLEX WAREHOUSE

BUILDING HIGHLIGHTS



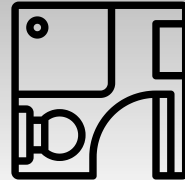
Flex Space:
Industrial or office
uses



**Gated surface
parking ± 7
spaces**

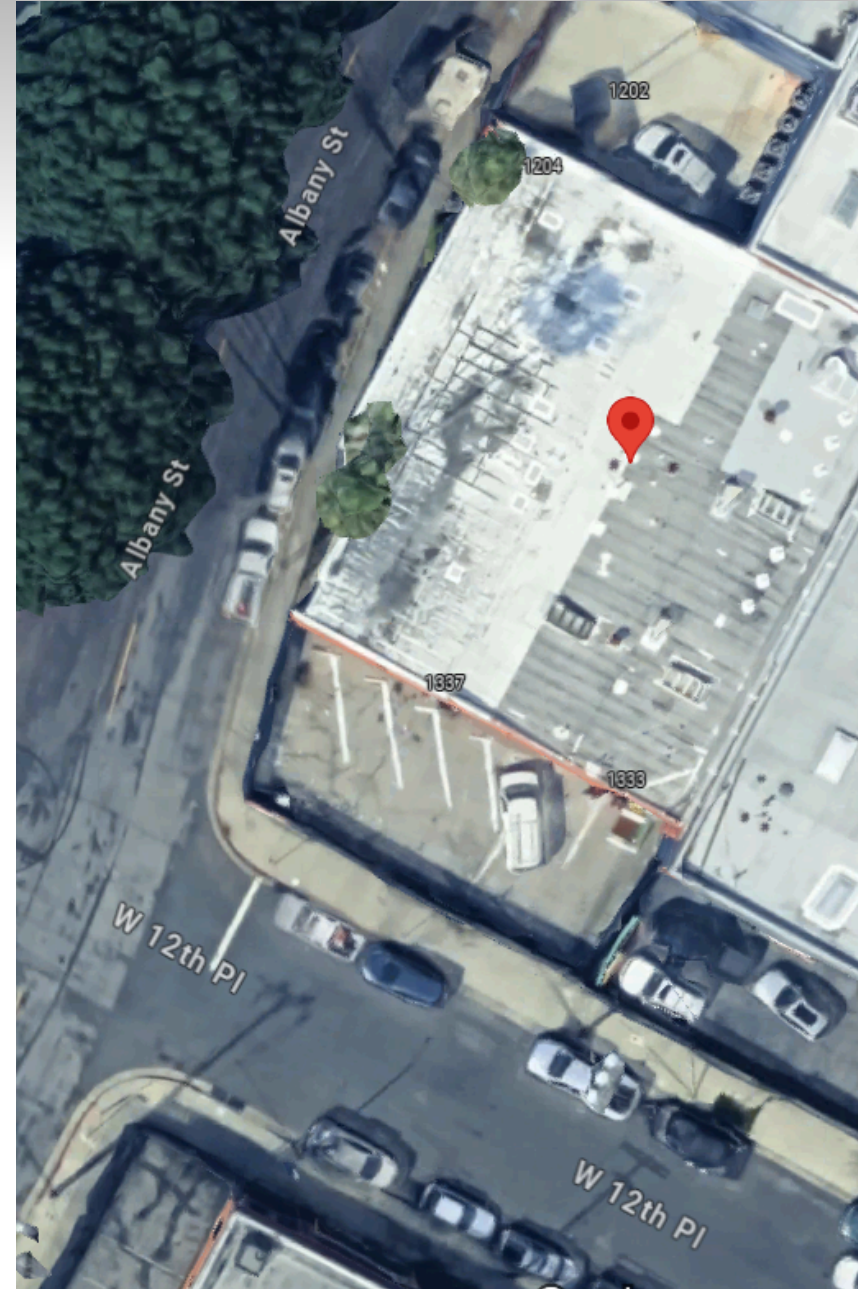


**Large Open
Floor Plan**



**3 warehouse
restrooms**

Available Space	7,320 sq. ft.
Lease Rate	\$1.45 /sq.ft./mo. Modified Gross
Tenancy	Single
Clear Height	12'
Power	600 amps
Drive Ins	1 tot./7' w x 10' h
Stories	1
Zoning	CM
APN	5137-030-024



1212 ALBANY ST | LOS ANGELES | CA 90015

FOR LEASE

FLEX WAREHOUSE



1212 ALBANY ST | LOS ANGELES | CA 90015

FOR LEASE

FLEX WAREHOUSE



1212 ALBANY ST | LOS ANGELES | CA 90015

FOR LEASE

FLEX WAREHOUSE



1212 ALBANY ST | LOS ANGELES | CA 90015

FOR LEASE

FLEX WAREHOUSE



1212 ALBANY ST | LOS ANGELES | CA 90015

FOR LEASE

FLEX WAREHOUSE

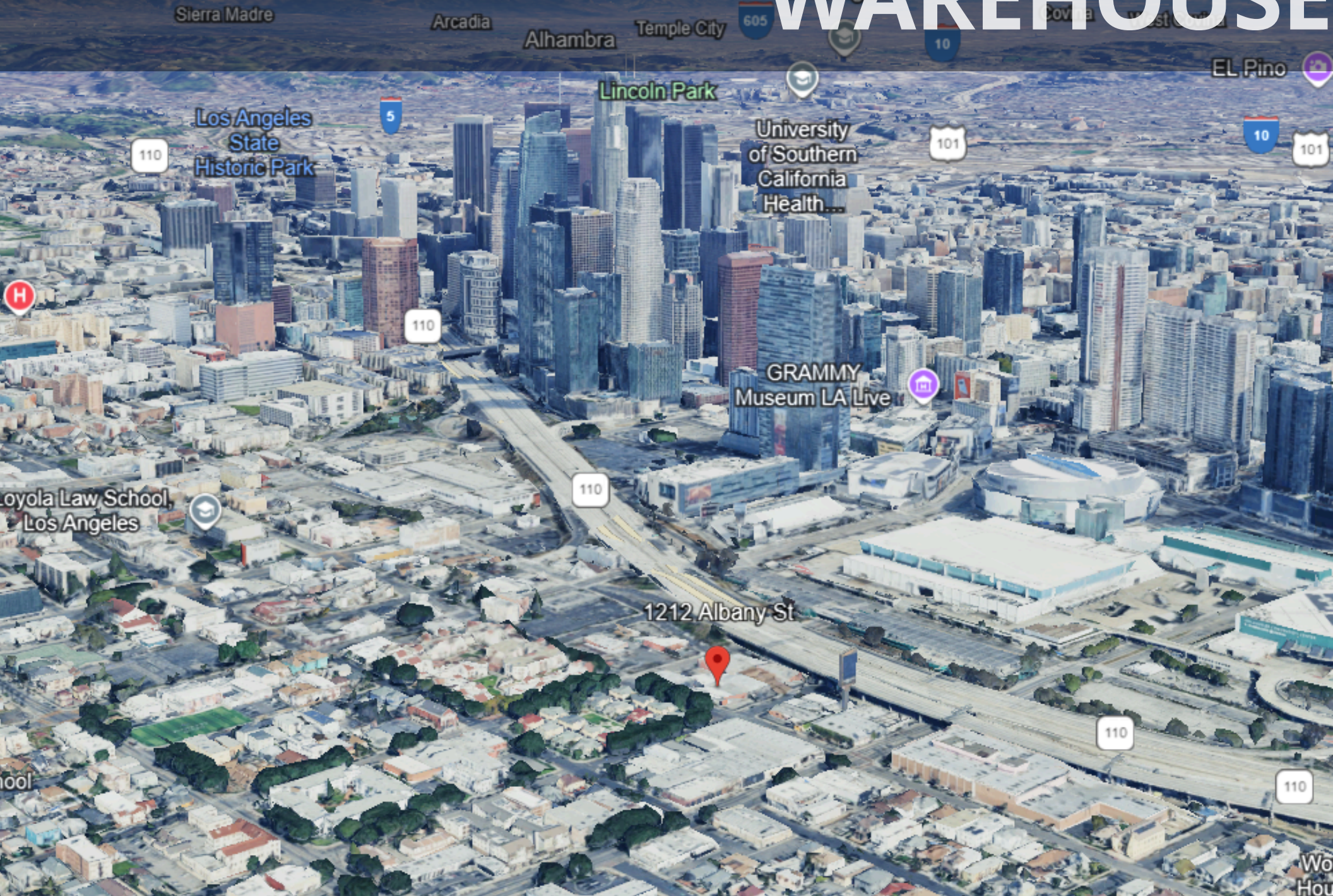


1212 Albany St

1212 ALBANY ST | LOS ANGELES | CA 90015

FOR LEASE

FLEX WAREHOUSE



FOR MORE INFORMATION REGARDING THIS OPPORTUNITY, PLEASE CONTACT:



JESSE MCKENZIE

Senior Vice President

714.883.6875

jesse@majorproperties.com

License: CA # 01939062



BRAD LUSTER

President

213.276.2483

brad@majorproperties.com

License: CA # 00913803

The information contained in this offering material is confidential and furnished solely for the purpose of a review by prospective Buyers of the subject property and is not to be used for any other purpose or made available to any other person without the express written consent of Major Properties.

This Brochure was prepared by Major Properties. It contains summary information pertaining to the Property and does not purport to be all-inclusive or to contain all of the information that a prospective Buyer may desire. All information is provided for general reference purposes only and is subject to change. The summaries do not purport to be complete or accurate descriptions of the full documents involved, nor do they constitute a legal analysis of such documents.

This information has been secured from sources we believe to be reliable. We make no representations or warranties, expressed or implied, as to the accuracy of the information. References to square footage or age are approximate. Recipient of this report must verify the information and bears all risk for any inaccuracies.

MajorProperties.com

MAJOR PROPERTIES

1200 W Olympic Blvd

Los Angeles, CA 90015

MAJOR PROPERTIES
REAL ESTATE
Commercial • Industrial